

Secure System Administrator™

Welcome to Secure System Administrator (SSA) from SecureAgent Software!

Use Secure System Administrator to remotely manage an unlimited number of SecureAgent® servers—they're all under your control!

Send immediate e-mail notifications when:

- The application, security and system event logs are updated
- Hard disk capacity decreases to a particular level
- Processor use increases to a particular level

Create, manage, debug and edit an unlimited number of REXX executable programs to:

- Monitor applications and events.
- Send e-mails and SNMP traps to notify administrators of those events.
- Retrieve REXX executable programs from a remote server, edit them, place them back on the remote server, and launch them there!
- Write multiple small REXX executable programs to build a large program!
- Edit small parts of large programs by running small REXX executable files.
- Launch applications.
- Monitor system “health” (CPU usage, disk space left, etc.).
- Start and stop services.
- Execute system commands.
- Correct problems.

Additionally, you can control access and privileges from a central location!

Place logon user IDs and passwords in a Central User Database. Then, managing them is easy—making administration easy! It's the smart, professional way to run your business!

Use our sample REXX programs (shown in Table 2 on page 4) to write your own. Then you're on your way!

Benefits and Features of Secure System Administrator

Benefits

- It's part of an integrated suite of Secure Data Innovations products!
- Central access (logon) control (using the Central User Database).
- Convenient.
- Use custom-written programs (“plug-ins”) to run/control any task.

(Benefits Continued)

SecureAgent Software

- Remotely manage an unlimited number of SecureAgent servers!
- Remotely create, manage, debug and edit an unlimited number of REXX executable programs.
 - Retrieve REXX executable programs from a remote server, edit them, place them back on the remote server, and launch them!
 - Send REXX programs to remote servers, and launch them there.
 - Write multiple small REXX executable programs to build a large program!
 - Simultaneously run an unlimited number of REXX executable programs.
 - Connect to a SecureAgent server using either HTTP proxy or the SecureAgent gateway.
 - Error messages show the line number of the error.
- Savings
 - Increased productivity (remote access = more effective use of time)
 - Increased employee retention (remote access = happier employees)
 - Preservation of your valuable resources (very small footprint)
- Flexibility—Manage and monitor tasks, services, drivers, system performance, etc.

Features

- Easy-to-use interface (shown in Figure 1 on the following page)
- Easy-to-use REXX language
- The Central User Database
- Sample REXX programs (shown in Table 2 on page 4) for:
 - Secure System Administrator
 - SuperVision
- Secure Data Innovations's patented and patent-pending security technology
- Very small footprint
- Runs under Linux[®], Solaris[™], or Windows[®].

Figure 1 on the next page shows the Secure System Administrator window.

SecureAgent Software

Figure 1: The Secure System Administrator Window

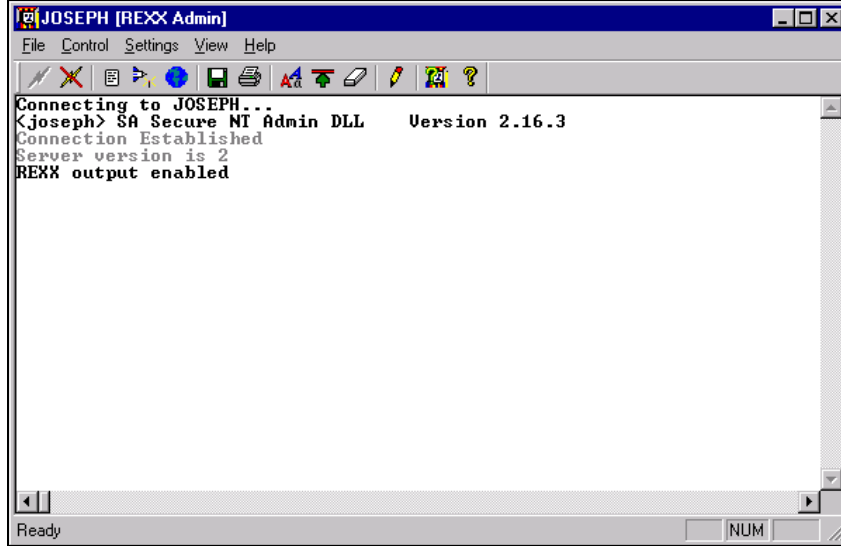















Table 1 shows the functions of the Secure System Administrator window's icons.

Table 1: Functions of the Secure System Administrator Window's Icons

Icon	Function
	Connect to a SecureAgent host
	Disconnect from the SecureAgent host
	Manage REXX source code and launch REXX programs
	Manage running REXX programs
	Manage REXX global variables
	Save the contents of the output window
	Print the contents of the output window
	Choose a font for your screen
	Limit how many lines of output are kept
	Erase the contents of the output window
	Edit local REXX programs
	Show REXX help
	About Secure System Administrator

SecureAgent Software

Figure 2 below shows the REXX Program Editor window (with the Open dialog box opened).

Figure 2: The REXX Program Editor Window (with the Open Dialog Box Opened)

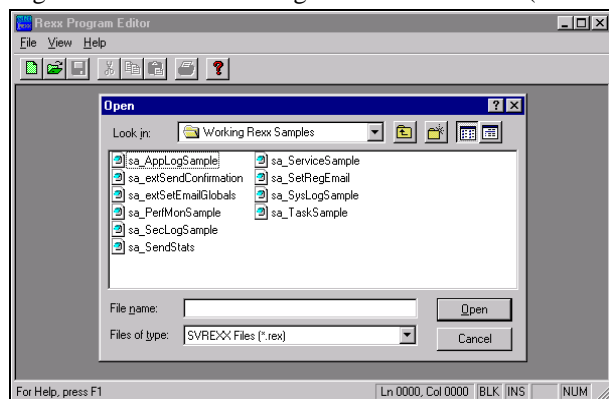


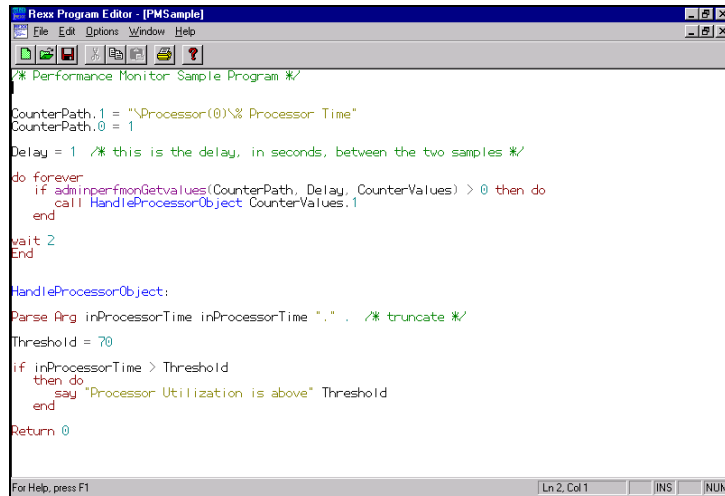
Table 2 below shows the sample REXX programs and their functions.

Table 2: The Sample REXX Programs and Their Functions

Sample REXX Program	Function
sa_AppLogSample	Monitors a machine's application event log, sends an e-mail when a SecureAgent login failure occurs and saves the incident to a log file
sa_PerfMonSample	Reads system performance monitor object counters and sends e-mails when they break particular thresholds. Editing the file is easy, so, in addition to setting thresholds, you can add or remove objects.
sa_SecLogSample	Monitors a machine's security event log and sends an e-mail when an NT login failure occurs
sa_SendStats	Reads the log files created by sa_AppLogSample and sa_SecLogSample and summarizes and e-mails the results
sa_ServiceSample	Keeps a particular set of services running at all times. If one of those services isn't running, this program will attempt to start it.
sa_SysLogSample	Monitors a machine's system event log and sends an e-mail when hard disk capacity decreases to a pre-defined level
sa_TaskSample	Keeps a particular set of applications running at all times. If one of those applications isn't running, this program will attempt to launch it.
sa_extSendConfirmation	Secure System Administrator sample REXX file names beginning with "ext" are used as external REXX routines. Therefore, call them from within other REXX programs instead of calling them directly from the REXX Administrator program. When an executable program calls sa_extSendConfirmation, it will also pass both the name of the program and the machine's name. Then, sa_extSendConfirmation will send an e-mail stating that that particular REXX program started on that machine.
sa_extSetEmailGlobals	Every Secure System Administrator sample REXX program that sends e-mail obtains e-mail addresses from global variables. This program will ensure that the globals have been set up. If they haven't been, this program will read the addresses from the registry and set them up (running sa_SetRegEmail.rex places the addresses in the registry).
sa_SetRegEmail	E-mail addresses are "hard-coded" into this file, which stores them in the registry for use by sa_extSetEmailGlobals.

Figure 3 on the next page shows the REXX Program Editor window (with the PMSample REXX executable file opened).

Figure 3: The REXX Program Editor Window
(with the PMSample REXX Executable File opened)



```
REXX Program Editor - [PMSample]
File Edit Options Window Help

/* Performance Monitor Sample Program */

CounterPath.1 = "\Processor(0)\% Processor Time"
CounterPath.0 = 1

Delay = 1 /* this is the delay, in seconds, between the two samples */

do forever
  if adminperfmongetvalues(CounterPath, Delay, CounterValues) > 0 then do
    call HandleProcessorObject CounterValues.1
  end
wait 2
End

HandleProcessorObject:
Parse Arg inProcessorTime inProcessorTime "." . /* truncate */
Threshold = 70

if inProcessorTime > Threshold
  then do
    say "Processor Utilization is above" Threshold
  end
Return 0

For Help, press F1                               |Ln 2, Col 1| INS | NUM
```

For further information, please contact us at:

SecureAgent Software
2448 East 81st Street, Suite 2000
Tulsa, OK 74137-4271 USA
Voice: 918.971.1600
Fax: 918.971.1623
www.SecureAgent.com